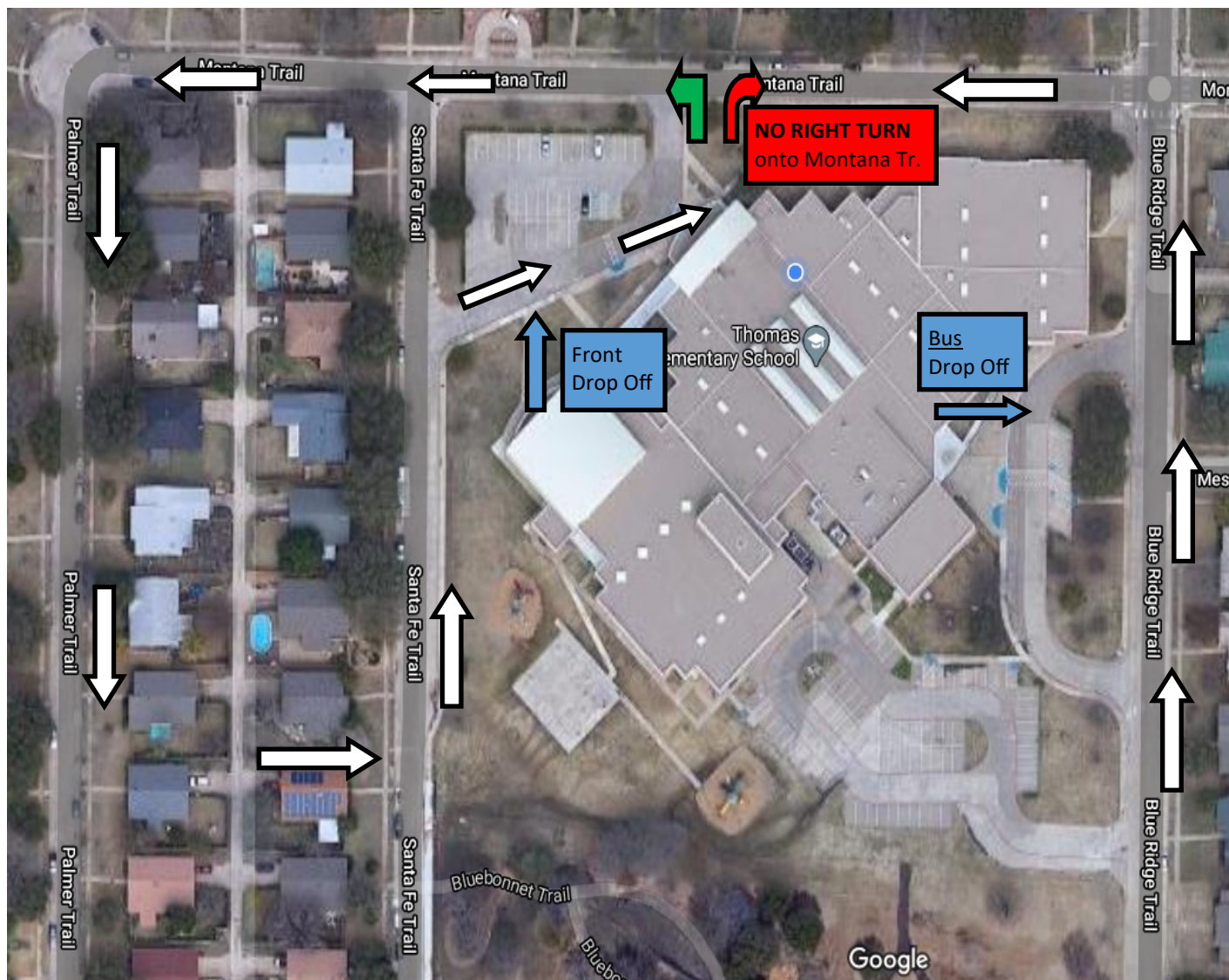


Morning Drop Off

Our goal is to keep all students safe and healthy. Thank you in advance for your flexibility and patience.



Prior to arrival at school-

Please screen your child **daily** for the **following symptoms**- cough, shortness of breath or difficulty breathing, headache, sore throat, fever of 100 degrees or higher, chills, new loss of taste or smell, diarrhea, congestion or runny nose, nausea or vomiting. If your child has any of these, please keep them home.

ARRIVAL/DROP-OFF

Buses will drop off in back circular drive.

Walkers/bike riders will enter through the through double glass doors near the gym.

Car riders will drop off in front circular drive, and enter through double glass doors near the gym.

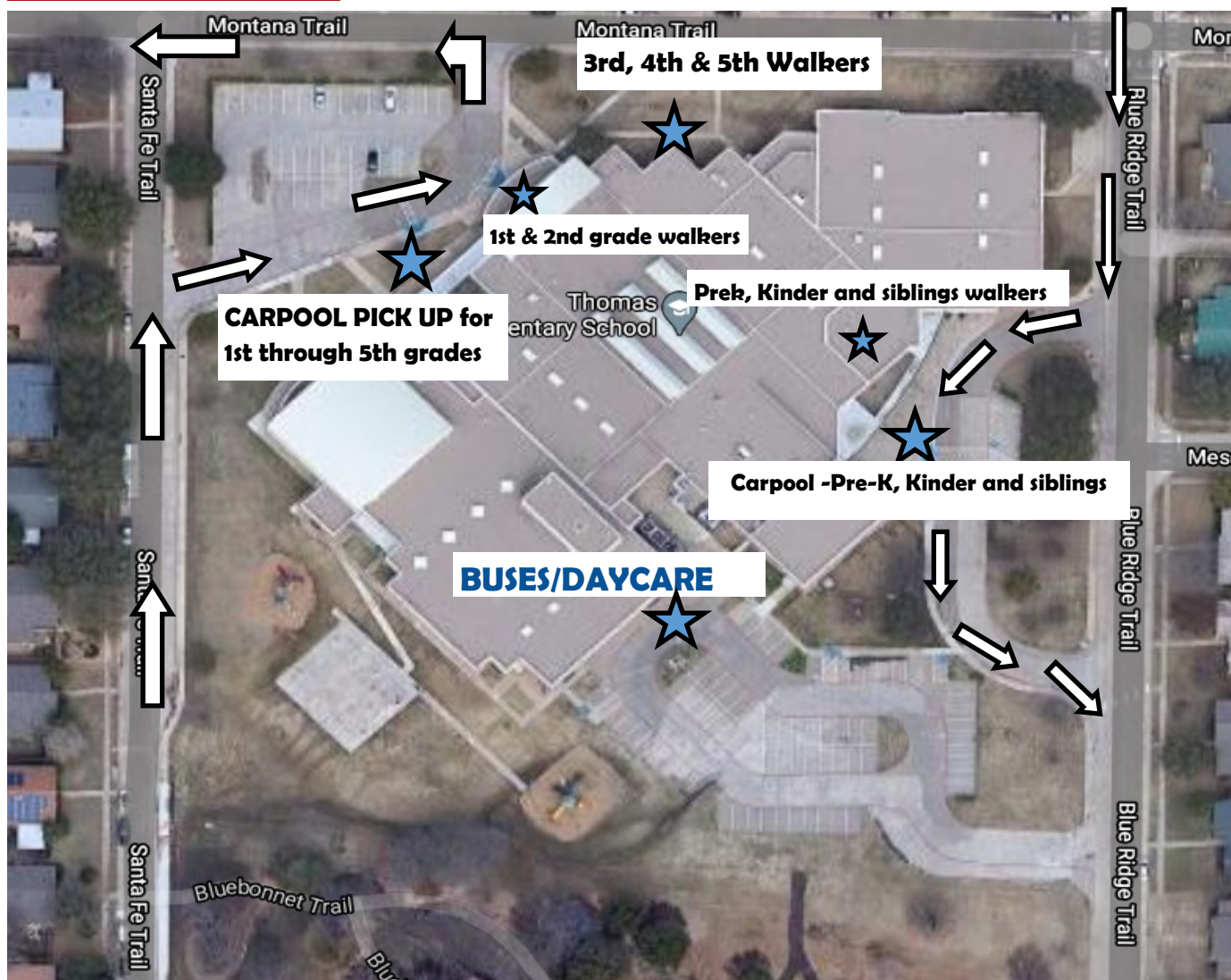
BREAKFAST

Doors open @ 7:00 for breakfast. **ALL** students enter through the double glass doors near the gym. Students who are having breakfast will go directly to the cafeteria and will be dismissed to their classrooms from there at 7:15. All other students will wait in the gym to be dismissed to their classrooms for the start of their school day at 7:15.



Afternoon Pick Up

Our goal is to keep all students safe and healthy. Thank you in advance for your flexibility and patience



Bus/DayCare

Buses/Daycare riders will be brought to the rear circular drive near the cafeteria for dismissal.

Carpool

1st through 5th grades will be dismissed from the doors closest to the gym. See map.

Pre-K and Kindergarten students *with siblings* will be dismissed through the back carpool lane. See map.

Walkers

3rd-5th graders will be dismissed from the doors nearest the art room. See map.

Kinder walkers and their siblings will be dismissed by the hallway under the back canopy. See map.

Parents must notify the school by 2:00 pm if there is a change to how a student will go home. We are unable to make changes just before dismissal. Please make sure you write your student's name on the YELLOW dismissal card and have it visible in your car window or have it with you daily when picking up your child at dismissal.